



MONTHLY SUMMARY OF STATISTICS

VICTORIA

EMBARGO: 11:30AM (CANBERRA TIME) FRI 19 NOV 1999

CONTENTS

	<i>page</i>
Notes	2
Selected features	3
TABLES	
List of tables.....	4
Demography.....	5
Labour.....	6
Wages.....	9
Prices.....	10
Meat production.....	11
Building.....	12
Finance.....	15
Retail.....	16
Trade.....	17
Tourism.....	18

- For further information about these and related statistics, contact Client Services in any ABS office as shown on the back cover of this publication, or Robert Letheby on Melbourne 03 9615 7643.

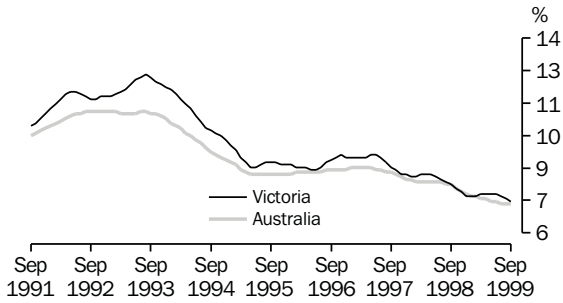
NOTES

FORTHCOMING ISSUES	<table border="0"> <thead> <tr> <th style="text-align: left;"><i>ISSUE</i></th> <th style="text-align: left;"><i>RELEASE DATE</i></th> </tr> </thead> <tbody> <tr> <td>November 1999</td> <td>20 December 1999</td> </tr> <tr> <td>December 1999</td> <td>18 January 1999</td> </tr> <tr> <td>January 2000</td> <td>22 February 2000</td> </tr> <tr> <td>February 2000</td> <td>21 March 2000</td> </tr> <tr> <td>March 2000</td> <td>18 April 2000</td> </tr> <tr> <td>April 2000</td> <td>23 May 2000</td> </tr> </tbody> </table>	<i>ISSUE</i>	<i>RELEASE DATE</i>	November 1999	20 December 1999	December 1999	18 January 1999	January 2000	22 February 2000	February 2000	21 March 2000	March 2000	18 April 2000	April 2000	23 May 2000				
<i>ISSUE</i>	<i>RELEASE DATE</i>																		
November 1999	20 December 1999																		
December 1999	18 January 1999																		
January 2000	22 February 2000																		
February 2000	21 March 2000																		
March 2000	18 April 2000																		
April 2000	23 May 2000																		
ABOUT THIS PUBLICATION	<p>The aim of this publication is to provide users with a range of the latest statistics available at the end of each month of issue. Consequently, the dates and periods shown are not always the same for each table, but are in each case the latest figures available at that time.</p>																		
SEASONAL ADJUSTMENT	<p>Seasonal adjustment is a means of removing the estimated effects of normal seasonal variations from economic time series so that the effects of other influences are obvious. Seasonal variations are the systematic (though not necessarily regular) intra-year movements of economic time series. These are often the result of non-economic phenomena, such as climatic changes and regular religious festivals, e.g. Christmas and Easter.</p>																		
TREND ESTIMATE	<p>Smoothing seasonally adjusted series produces a measure of trend by removing the impact of the irregular component of the series. The trend estimates are derived by applying a 13-term Henderson weighted moving average to the respective seasonally adjusted series. Readers are reminded that trend estimates are subject to revision as subsequent months' data become available.</p>																		
CHANGES IN THIS ISSUE	<p>There are no changes in this issue.</p>																		
SYMBOLS AND OTHER USAGES	<table border="0"> <tr> <td>n.a.</td> <td>not available</td> </tr> <tr> <td>n.e.c.</td> <td>not elsewhere classified</td> </tr> <tr> <td>n.p.</td> <td>not available for publication but included in totals where applicable</td> </tr> <tr> <td>n.y.a.</td> <td>not yet available</td> </tr> <tr> <td>p</td> <td>preliminary—figure or series subject to revision</td> </tr> <tr> <td>r</td> <td>figure or series revised since previous issue</td> </tr> <tr> <td>*</td> <td>estimate has a relative standard error greater than 25% and is therefore subject to sampling variability too high for most practical uses</td> </tr> <tr> <td>. .</td> <td>not applicable</td> </tr> <tr> <td>—</td> <td>nil or rounded to zero</td> </tr> </table>	n.a.	not available	n.e.c.	not elsewhere classified	n.p.	not available for publication but included in totals where applicable	n.y.a.	not yet available	p	preliminary—figure or series subject to revision	r	figure or series revised since previous issue	*	estimate has a relative standard error greater than 25% and is therefore subject to sampling variability too high for most practical uses	. .	not applicable	—	nil or rounded to zero
n.a.	not available																		
n.e.c.	not elsewhere classified																		
n.p.	not available for publication but included in totals where applicable																		
n.y.a.	not yet available																		
p	preliminary—figure or series subject to revision																		
r	figure or series revised since previous issue																		
*	estimate has a relative standard error greater than 25% and is therefore subject to sampling variability too high for most practical uses																		
. .	not applicable																		
—	nil or rounded to zero																		

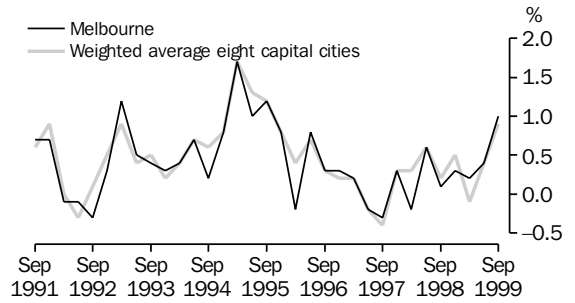
Zia ABBASI,
Regional Director, Victoria

SELECTED FEATURES

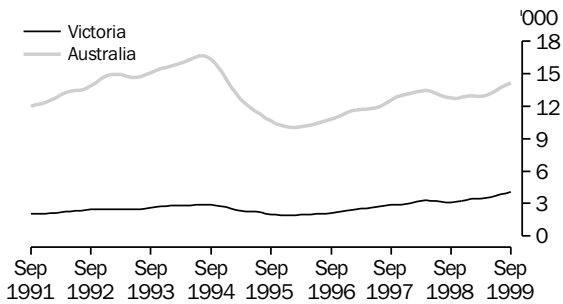
UNEMPLOYMENT RATE, Trend—Monthly



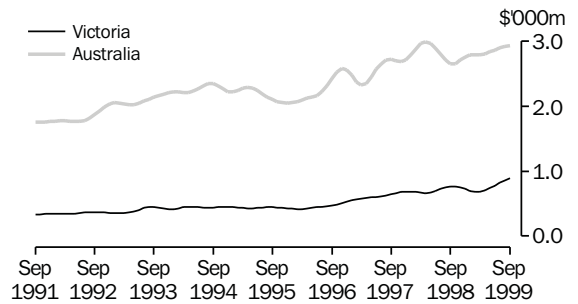
CONSUMER PRICE INDEX, Change from previous quarter



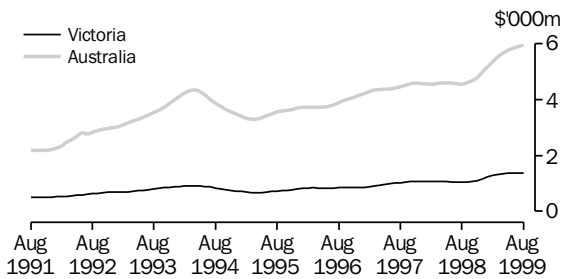
NEW DWELLING UNITS APPROVED, Trend—Monthly



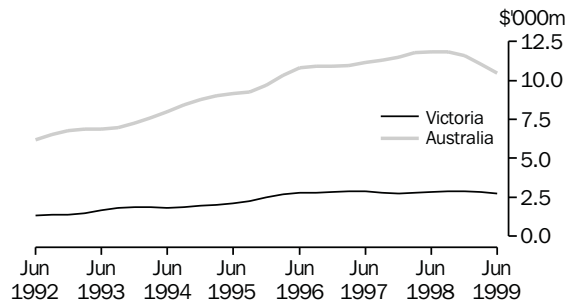
VALUE OF ALL BUILDINGS APPROVED, Trend—Monthly



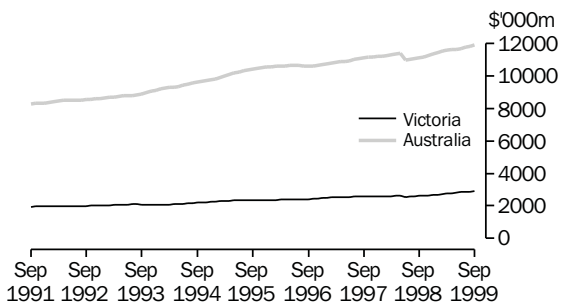
TOTAL VALUE OF SECURED HOUSING FINANCE COMMITMENTS TO INDIVIDUALS, Trend—Monthly



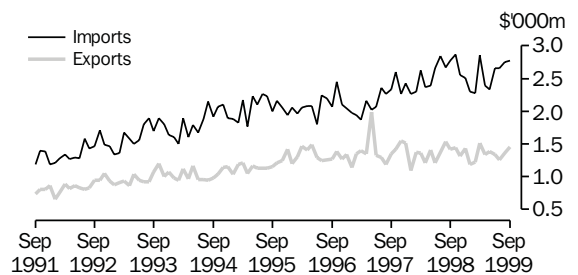
PRIVATE NEW CAPITAL EXPENDITURE, Trend—Quarterly



RETAIL TURNOVER, Trend—Monthly



MERCHANDISE IMPORTS AND EXPORTS, Original—Monthly



LIST OF TABLES

			Page
DEMOGRAPHY	1	Estimated resident population	5
	2	Births, deaths, marriages and divorces	5
LABOUR	3	Labour force status of the civilian population aged 15 years and over	6
	4	Employed persons, by industry	7
	5	Job vacancies	8
	6	Industrial disputes causing stoppage of work	8
	7	Average weekly earnings of employees	9
	8	Consumer Price Index—Melbourne	10
	9	Price Index of Materials Used in Building—Melbourne	10
MEAT PRODUCTION	10	Livestock slaughterings	11
	11	Meat production	11
BUILDING	12	Building approvals—Melbourne and Victoria	12
	13	New houses and other residential buildings, number of dwelling units	13
	14	Value of building	14
FINANCE	15	Private new capital expenditure, by selected industries and type of asset	15
	16	Commercial finance commitments	15
	17	Secured housing finance commitments, dwelling units	16
RETAIL	18	Retail turnover, by industry (excluding motor vehicles, parts, petrol, etc.)	16
TRADE	19	Exports and imports, by sections of the Australian Export and Import Classifications	17
	20	Overseas trade, major trading partners	17
	21	Value of overseas trade—Victoria and Australia	18
TOURISM	22	Tourist accommodation	18

1

ESTIMATED RESIDENT POPULATION

Period	At end of period			Increase during period		Melbourne Statistical Division at 30 June(a)
	Males	Females	Persons	Natural	Total	
	'000	'000	'000	'000	'000	'000
1995-96	2 252.6	2 307.5	4 560.2	28.5	42.8	3 283.3
1996-97	2 275.2	2 330.0	4 605.2	28.7	45.1	3 321.8
1997-98	2 301.0	2 353.9	4 654.9	27.7	49.7	3 371.3
1997						
June qtr	2 275.2	2 330.0	4 605.2	6.8	6.6	..
September qtr	2 281.9	2 336.0	4 617.8	6.1	12.6	..
December qtr	2 286.3	2 341.1	4 627.4	7.4	9.6	..
1998						
March qtr	2 295.3	2 348.9	4 644.3	7.4	16.9	..
June qtr	2 301.0	2 353.9	4 654.9	6.8	10.7	..
September qtr	2 308.2	2 360.8	4 669.0	6.4	14.1	..
December qtr	2 315.3	2 368.6	4 683.8	6.6	14.8	..
1999						
March qtr p	2 324.6	2 376.8	4 701.4	6.9	17.6	..

(a) Based on the 1998 Statistical Division boundaries.

Source: Australian Demographic Statistics (Cat. no. 3101.0) (quarterly).

2

BIRTHS, DEATHS, MARRIAGES AND DIVORCES

Period	Registrations				Annual rate per 1,000 of mean estimated resident population				
	Births	Deaths (including infant deaths)	Marriages	Divorces	Births	Deaths	Marriages	Divorces	Infant deaths per 1,000 live births
	no.	no.	no.	no.	rate	rate	rate	rate	rate
1995-96	61 324	32 827	26 117	12 002	13.51	7.23	5.75	2.64	5.30
1996-97	61 232	32 570	25 664	13 046	13.36	7.11	5.60	2.85	4.46
1997-98 p	60 143	32 423	25 955	11 916	13.00	7.01	5.61	2.58	4.86
1997									
June qtr	14 973	8 131	6 000	3 308
September qtr	15 437	9 344	3 822	3 164
December qtr	15 259	7 813	7 533	3 181
Year—1997	60 610	32 760	25 456	12 463	13.16	7.11	5.53	2.71	4.82
1998									
March qtr	14 577	7 169	8 530	2 663
June qtr	14 870	8 097	6 070	2 908
September qtr p	15 550	9 131	3 912	3 188
December qtr p	15 193	8 614	7 860	3 548
Year—1998 p	60 190	33 011	26 372	12 307	12.93	7.09	5.67	2.64	5.15
1999									
March qtr p	13 492	6 618	8 659	2 534

Source: Demography, Victoria (Cat. no. 3311.2) (annual). Australian Demographic Statistics (Cat. no. 3101.0) (quarterly).

3

LABOUR FORCE STATUS OF THE CIVILIAN POPULATION AGED 15 YEARS AND OVER

Month	Employed		Unemployed looking for work			Labour force	Not in labour force	Civilian population 15 years and over	Unemployment rate	Participation rate
	Full-time Total	Total	Full-time	Part-time	Total					
	'000	'000	'000	'000	'000	'000	'000	'000	%	%
MALES										
1998										
July	1 059.9	1 217.4	89.3	13.7	103.0	1 320.5	492.4	1 812.8	7.8	72.8
August	1 050.0	1 206.8	87.4	16.5	103.9	1 310.8	504.0	1 814.8	7.9	72.2
September	1 073.4	1 236.2	88.0	18.5	106.5	1 342.7	474.0	1 816.7	7.9	73.9
October	1 062.5	1 218.4	81.4	17.5	98.9	1 317.3	501.9	1 819.2	7.5	72.4
November	1 056.5	1 218.9	83.3	13.9	97.2	1 316.1	505.5	1 821.6	7.4	72.3
December	1 076.5	1 237.3	80.7	19.3	100.0	1 337.3	486.8	1 824.1	7.5	73.3
1999										
January	1 061.1	1 219.8	89.0	17.0	106.0	1 325.9	500.4	1 826.2	8.0	72.6
February	1 085.5	1 231.2	94.5	16.2	110.7	1 341.9	486.5	1 828.4	8.2	73.4
March	1 083.1	1 238.3	81.9	17.1	99.0	1 337.4	493.2	1 830.5	7.4	73.1
April	1 065.9	1 229.7	91.6	19.7	111.3	1 341.0	491.9	1 832.9	8.3	73.2
May	1 065.2	1 220.4	88.8	21.9	110.7	1 331.1	504.2	1 835.3	8.3	72.5
June	1 072.6	1 248.4	87.4	11.5	98.8	1 347.2	490.4	1 837.7	7.3	73.3
July	1 082.6	1 243.2	80.7	14.8	95.5	1 338.7	501.3	1 840.0	7.1	72.8
August	1 072.4	1 225.7	80.3	18.1	98.4	1 324.2	518.2	1 842.3	7.4	71.9
September	1 079.6	1 243.7	82.8	17.7	100.5	1 344.2	500.5	1 844.7	7.5	72.9
FEMALES										
1998										
July	536.9	944.8	54.0	29.0	83.0	1 027.8	866.5	1 894.3	8.1	54.4
August	537.9	954.2	50.4	31.0	81.4	1 035.7	860.6	1 896.3	7.9	54.3
September	535.2	957.8	58.2	32.0	90.2	1 048.0	850.2	1 898.2	8.6	54.6
October	530.6	942.7	47.3	27.1	74.4	1 017.2	883.4	1 900.6	7.3	55.2
November	520.1	941.0	49.8	27.2	77.0	1 017.9	885.0	1 902.9	7.6	53.5
December	543.7	954.0	48.4	27.0	75.4	1 029.4	875.9	1 905.3	7.3	54.0
1999										
January	533.9	915.4	52.2	24.0	76.2	991.6	915.7	1 907.2	7.7	52.0
February	531.6	929.5	54.6	32.1	86.7	1 016.2	893.0	1 909.2	8.5	53.2
March	525.8	936.6	48.1	32.2	80.3	1 016.9	894.3	1 911.2	7.9	53.2
April	520.0	936.8	45.6	28.2	73.8	1 010.6	902.9	1 913.5	7.3	52.8
May	520.3	940.0	43.5	28.0	71.5	1 011.5	904.4	1 915.9	7.1	52.8
June	523.6	951.8	44.5	25.1	69.6	1 021.4	896.8	1 918.2	6.8	53.2
July	542.5	963.3	38.6	35.3	73.9	1 037.2	883.4	1 920.6	7.1	54.0
August	527.8	953.3	38.4	29.0	67.4	1 020.6	902.3	1 922.9	6.6	53.1
September	539.5	981.9	45.5	33.9	79.3	1 061.2	864.1	1 925.3	7.5	55.1
PERSONS										
1998										
July	1 596.8	2 162.2	143.3	42.7	186.0	2 348.3	1 358.9	3 707.1	7.9	63.3
August	1 587.9	2 161.1	137.8	47.5	185.4	2 346.4	1 364.6	3 711.0	7.9	63.2
September	1 608.6	2 194.1	146.2	50.4	196.6	2 390.7	1 324.2	3 714.9	8.2	64.4
October	1 593.0	2 161.1	128.7	44.6	173.3	2 334.5	1 385.3	3 719.7	7.4	62.8
November	1 576.6	2 159.8	133.1	41.1	174.2	2 334.1	1 390.5	3 724.5	7.5	62.7
December	1 620.2	2 191.3	129.2	46.3	175.4	2 366.7	1 362.6	3 729.4	7.4	63.5
1999										
January	1 595.0	2 135.2	141.2	41.0	182.2	2 317.4	1 416.1	3 733.5	7.9	62.1
February	1 617.1	2 160.8	149.1	48.3	197.4	2 358.1	1 379.5	3 737.6	8.4	63.1
March	1 609.0	2 175.0	130.0	49.3	179.3	2 354.3	1 387.5	3 741.8	7.6	62.9
April	1 585.9	2 166.6	137.3	47.8	185.1	2 351.6	1 394.8	3 746.5	7.9	62.8
May	1 582.8	2 160.3	132.3	49.9	182.2	2 342.6	1 408.6	3 751.2	7.8	62.4
June	1 596.2	2 200.2	131.9	36.6	168.4	2 368.6	1 387.3	3 755.9	7.1	63.1
July	1 625.1	2 206.5	119.4	50.1	169.4	2 375.9	1 384.6	3 760.6	7.1	63.2
August	1 600.2	2 179.0	118.7	47.1	165.8	2 344.8	1 420.5	3 765.3	7.1	62.3
September	1 619.1	2 225.5	128.3	51.6	179.9	2 405.4	1 364.5	3 770.0	7.5	63.8

Source: Labour Force, Victoria (Cat. no. 6202.2) (quarterly).

4

EMPLOYED PERSONS, BY INDUSTRY

	May 1998	Aug 1998	Nov 1998	Feb 1999	May 1999	Aug 1999
Industry division	'000	'000	'000	'000	'000	'000
MALES						
Agriculture, forestry and fishing	61.7	52.0	51.8	57.9	58.6	56.3
Mining	*3.6	*2.2	5.3	*3.8	*3.1	*2.9
Manufacturing	243.4	247.1	244.3	259.0	241.9	236.6
Electricity, gas and water supply	12.7	13.8	12.0	13.4	14.4	13.9
Construction	128.9	127.2	132.1	125.7	130.1	133.8
Wholesale trade	104.9	99.2	85.8	86.5	81.6	88.6
Retail trade	151.2	152.4	165.1	170.1	166.0	161.7
Accommodation, cafes and restaurants	39.8	41.2	39.9	42.4	41.7	40.0
Transport and storage	79.3	72.6	75.6	78.5	72.0	75.5
Communication services	22.3	25.1	26.4	28.5	27.8	27.9
Finance and insurance	40.3	43.9	50.4	45.4	43.4	36.8
Property and business services	135.6	149.7	148.4	138.3	154.3	162.2
Government administration and defence	36.2	35.9	31.4	28.6	28.8	27.7
Education	50.1	41.4	38.4	40.4	45.4	46.4
Health and community services	40.3	38.4	45.0	46.6	42.3	39.5
Cultural and recreational services	26.6	25.6	26.5	25.1	27.3	32.3
Personal and other services	45.7	39.3	40.3	41.2	41.5	43.4
Total	1 222.6	1 206.8	1 218.9	1 231.2	1 220.4	1 225.7
FEMALES						
Agriculture, forestry and fishing	31.7	26.5	25.3	28.8	26.8	26.4
Mining	*0.3	*0.8	*0.2	*0.0	*0.3	*0.6
Manufacturing	98.4	95.3	91.4	98.3	98.1	94.5
Electricity, gas and water supply	*3.0	*3.7	*2.5	*2.7	*3.9	*3.0
Construction	13.7	17.6	18.2	16.5	17.2	17.3
Wholesale trade	40.8	46.7	40.6	40.2	42.8	46.1
Retail trade	157.5	156.5	161.5	167.6	168.5	174.9
Accommodation, cafes and restaurants	49.2	49.2	49.9	43.8	44.6	47.0
Transport and storage	18.3	16.3	19.7	22.1	22.2	20.8
Communication services	12.5	13.9	13.2	10.9	14.0	14.1
Finance and insurance	48.4	54.9	51.2	45.1	37.3	39.7
Property and business services	108.9	108.4	112.1	108.0	108.9	123.6
Government administration and defence	35.8	40.2	40.5	38.2	38.7	38.6
Education	96.1	94.8	93.3	84.0	101.1	105.1
Health and community services	160.9	158.0	155.4	155.4	144.3	137.6
Cultural and recreational services	26.2	28.4	28.2	26.2	32.6	26.2
Personal and other services	37.2	42.8	37.8	41.5	38.7	37.6
Total	939.0	954.2	941.0	929.5	940.0	953.3
PERSONS						
Agriculture, forestry and fishing	93.4	78.5	77.1	86.6	85.3	82.7
Mining	*3.9	*3.1	5.6	*3.8	*3.4	*3.5
Manufacturing	341.8	342.4	335.8	357.4	340.0	331.2
Electricity, gas and water supply	15.7	17.6	14.5	16.2	18.3	16.9
Construction	142.5	144.8	150.3	142.2	147.3	151.1
Wholesale trade	145.7	145.9	126.4	126.7	124.4	134.7
Retail trade	308.7	308.9	326.6	337.6	334.5	336.7
Accommodation, cafes and restaurants	89.1	90.4	89.8	86.3	86.3	87.1
Transport and storage	97.6	88.9	95.3	100.6	94.2	96.4
Communication services	34.8	39.0	39.6	39.4	41.9	42.0
Finance and insurance	88.7	98.7	101.6	90.5	80.7	76.5
Property and business services	244.5	258.1	260.5	246.3	263.3	285.8
Government administration and defence	72.0	76.1	72.0	66.8	67.5	66.3
Education	146.2	136.2	131.7	124.4	146.5	151.5
Health and community services	201.3	196.4	200.4	202.0	186.6	177.1
Cultural and recreational services	52.8	54.0	54.6	51.4	60.0	58.5
Personal and other services	82.9	82.1	78.0	82.8	80.2	80.9
Total	2 161.6	2 161.1	2 159.8	2 160.8	2 160.3	2 179.0

Source: Labour Force, Victoria (Cat. no. 6202.2) (quarterly).

5

JOB VACANCIES

Month	Vacancies all persons '000	Industry			Sector		Job vacancy rate %
		Manufacturing '000	Other '000	Public '000	Private '000		
					Other '000	Public '000	
1998							
February	24.0	*2.5	21.5	1.8	*22.1		1.20
May	20.2	2.2	18.0	1.5	18.7		1.00
August	17.6	0.8	16.8	1.9	15.7		0.84
November	26.9	*1.2	*25.7	1.9	25.0		1.30
1999							
February	12.5	*1.0	*11.5	*2.4	10.2		0.61
May	17.6	*1.9	*15.7	2.5	15.1		0.90
August	24.7	n.a.	n.a.	3.0	21.8		1.26

Source: Job Vacancies and Overtime, Australia (Cat. no. 6354.0) (quarterly); Unpublished data, Quarterly Survey of Job Vacancies and Overtime.

6

INDUSTRIAL DISPUTES CAUSING STOPPAGE OF WORK

Month	Disputes		Employees involved				Working days lost		
	Beginning in period no.	Total no.	Beginning in period '000	Total '000	Manufacturing '000	Construction '000	Education, health, community services '000	Other industries	
								Other industries '000	Total '000
1998									
May	5	7	42.1	55.7	15.1	23.1	13.9	1.3	53.4
June	8	10	3.0	19.5	0.2	17.7	—	0.4	18.3
July	14	18	3.5	4.3	5.3	0.7	0.1	0.1	6.1
August	14	15	12.3	12.5	0.3	2.9	2.0	6.7	11.9
September	19	22	14.0	16.0	12.4	5.3	2.3	1.8	21.8
October	11	12	1.9	1.9	1.4	1.0	—	1.4	3.8
November	15	16	12.7	12.8	3.9	0.3	10.0	3.3	17.4
December	19	21	3.1	4.6	2.8	1.4	—	1.3	5.5
1999									
January	5	8	1.3	1.7	2.6	0.5	—	1.2	4.3
February	17	20	2.5	3.7	1.4	1.5	—	1.7	4.7
March	29	32	3.6	4.2	7.3	1.0	—	1.3	9.6
April	15	21	13.9	14.8	7.1	13.0	—	1.8	21.9
May	20	22	3.3	3.6	7.2	0.1	0.1	1.2	8.5
June	23	25	10.9	11.3	13.1	1.2	0.1	1.2	15.6
July	15	21	10.3	11.0	11.4	6.6	1.1	0.4	19.5

Source: Industrial Disputes, Australia (Cat. no. 6321.0) (monthly).

7

AVERAGE WEEKLY EARNINGS OF EMPLOYEES

Month	Males			Females			Persons		
	Full-time adult ordinary time earnings	Full-time adult total earnings	All males total earnings	Full-time adult ordinary time earnings	Full-time adult total earnings	All females total earnings	Full-time adult ordinary time earnings	Full-time adult total earnings	All employees total earnings
	\$	\$	\$	\$	\$	\$	\$	\$	\$
1998									
February	762.20	823.10	722.00	634.90	650.70	477.70	716.80	761.60	610.40
May	767.60	825.30	701.50	646.30	660.40	470.40	724.80	767.00	596.30
August	770.90	826.30	704.30	650.20	662.70	475.60	728.00	768.20	600.90
November	781.80	842.10	716.80	657.40	673.30	473.90	736.30	780.30	602.40
1999									
February	769.20	823.70	710.90	658.10	673.20	474.40	729.00	769.20	600.30
May	783.00	835.00	717.60	666.20	679.80	486.50	740.60	778.60	608.00

Source: *Average Weekly Earnings, States and Australia* (Cat. no. 6302.0) (quarterly).

8

CONSUMER PRICE INDEX—MELBOURNE

Melbourne

Period									All groups	Weighted average of eight capital cities—All groups
	Food	Clothing	Housing	Household equipment and operation	Transportation	Tobacco and alcohol	Health and personal care	Recreation and education		
1996–97	118.6	108.4	95.0	114.7	124.0	158.5	157.1	123.3	119.9	120.3
1997–98	120.5	108.9	86.5	115.0	123.3	161.4	162.2	127.6	119.8	120.3
1998–99	125.1	108.1	86.7	115.1	120.8	166.9	161.1	129.6	120.9	121.8
1998										
March qtr	120.7	109.0	84.1	115.1	122.1	162.0	163.6	129.4	119.6	120.3
June qtr	121.6	108.9	86.2	115.1	122.0	163.9	165.8	128.8	120.3	121.0
September qtr	123.6	108.9	85.3	115.3	121.0	165.0	166.7	128.4	120.4	121.3
December qtr	124.3	108.2	86.6	115.3	120.6	166.0	165.3	129.0	120.8	121.9
1999										
March qtr	125.8	107.5	87.3	114.7	119.9	167.6	155.7	131.0	121.0	121.8
June qtr	126.7	107.8	87.5	115.1	121.6	169.1	156.6	129.8	121.5	122.3
September qtr	127.8	107.5	88.8	114.3	125.9	169.4	157.0	130.7	122.7	123.4

Base of each group: year 1989–90=100.0

Source: Consumer Price Index (Cat. no. 6401.0) (quarterly).

9

PRICE INDEX OF MATERIALS USED IN BUILDING—MELBOURNE

Group				1998–1999		1999–2000		Weighted average of six state capital cities—Sep qtr 1999
	1996–97	1997–98	1998–99	Mar qtr	Jun qtr	Sep qtr		
House building								
All groups	115.3	117.1	118.0	117.7	117.4	119.2	120.5	
Other than house building								
Structural timber	110.1	115.6	116.2	116.6	112.0	113.1	124.6	
Clay bricks	113.1	117.9	119.6	119.6	119.3	119.3	120.0	
Ready mix concrete	111.5	111.4	112.9	112.5	113.2	111.6	104.9	
Precast concrete products	110.3	115.7	123.9	126.6	122.7	126.6	125.2	
Steel decking and cladding	109.2	109.4	108.0	108.1	107.2	107.8	113.2	
Structural steel	104.2	104.9	104.9	104.9	105.0	101.2	111.3	
Reinforcing steel bar, mesh, etc.	100.7	100.8	99.5	99.1	98.5	93.7	104.8	
Aluminium windows	100.6	100.0	100.4	100.1	101.6	102.0	111.5	
Fabricated steel products	116.7	120.0	124.7	124.6	125.1	125.1	117.6	
Builders' hardware	116.5	119.6	122.7	122.9	124.4	125.0	128.8	
Sand and aggregate	115.9	116.3	120.5	121.3	121.3	121.3	122.1	
Carpet	101.6	102.6	100.1	99.6	98.8	99.4	101.5	
Paint and other coatings	145.8	144.7	153.8	154.9	156.6	158.0	145.5	
Non-ferrous pipes and fittings	111.5	113.0	111.2	111.8	111.8	112.9	127.8	
All groups excluding electrical materials and mechanical services	110.0	111.0	112.3	112.2	112.5	112.0	114.2	
All electrical materials	112.0	109.8	112.4	114.3	114.8	115.8	120.3	
All mechanical services	115.0	114.9	118.2	118.9	119.2	119.6	118.5	
All plumbing materials	120.1	122.8	122.8	122.7	122.5	125.7	128.6	
All groups	110.9	111.4	113.2	113.3	113.7	113.4	115.2	

Base of each index: year 1989–90=100.0.

Source: Price Index of Materials Used in Building Other Than House Building, Six State Capital Cities (Cat. no. 6407.0) (quarterly).
Price Index of Materials Used in House Building, Six State Capital Cities (Cat. no. 6408.0) (quarterly).

10

LIVESTOCK SLAUGHTERINGS

Period	Cattle	Calves	Sheep	Lambs	Pigs
	'000	'000	'000	'000	'000
1996-97	1 675.9	697.3	2 806.6	5 978.9	1 397.2
1997-98	1 798.0	767.2	3 285.7	6 385.7	1 567.7
1998-99	1 752.4	724.7	3 071.5	6 681.1	1 572.8
1998					
June	147.4	64.3	204.5	482.9	149.6
July	156.6	103.2	220.3	582.7	157.1
August	122.6	164.1	190.5	538.7	134.6
September	141.8	168.9	216.3	623.5	135.4
October	160.6	83.6	275.9	581.6	131.1
November	159.9	21.3	291.4	595.9	129.7
December	161.0	10.1	252.3	606.8	143.3
1999					
January	155.6	5.9	256.9	554.6	102.8
February	161.4	6.0	296.0	538.1	111.0
March	146.1	15.0	314.3	574.6	132.9
April	128.3	24.5	263.9	510.4	126.6
May	134.3	43.8	262.6	466.3	135.2
June r	126.2	78.6	230.4	524.4	133.1
July r	124.9	90.6	246.2	554.1	127.0
August r	117.4	182.8	238.9	535.4	123.0
September	109.5	138.7	238.3	598.2	129.0

Source: Livestock Products, Australia (Cat. no. 7215.0) (monthly prior to July 1998 and quarterly from September 1998); Unpublished data, Monthly Livestock Collection.

11

MEAT PRODUCTION

Period	Meat (carcass weight)				
	Beef	Veal	Mutton	Lamb	Pigmeat
	tonnes	tonnes	tonnes	tonnes	tonnes
1996-97	373 819	14 293	55 545	111 403	99 226
1997-98	389 087	15 578	63 470	119 972	112 504
1998-99	398 241	14 467	61 477	119 168	114 581
1998					
June	31 257	1 315	3 903	9 101	11 038
July	34 735	1 978	4 330	11 183	11 560
August	27 301	3 230	3 785	10 331	9 732
September	31 706	3 311	4 397	11 989	9 923
October	36 345	1 667	5 756	11 364	9 713
November	36 593	479	5 951	11 795	9 268
December	36 318	251	5 173	10 452	9 751
1999					
January	35 430	149	5 200	10 571	7 449
February	38 184	153	5 815	10 339	8 035
March	33 412	332	6 217	11 110	9 635
April	30 360	497	5 104	9 786	9 527
May	30 429	878	5 121	9 085	10 164
June r	28 023	1 520	4 615	10 337	9 824
July r	28 011	1 729	4 976	11 002	9 358
August r	26 379	3 563	4 894	10 232	9 197
September	24 998	2 752	4 987	11 634	9 646

Source: Livestock Products, Australia (Cat. no. 7215.0) (monthly prior to July 1998 and quarterly from September 1998); Unpublished data, Monthly Livestock Collection.

Period	<i>New dwelling units(a)</i>							<i>Non-residential building(b)</i>				
	<i>Private sector</i>		<i>Public sector</i>		<i>Total(c)</i>			<i>Alterations and additions to residential buildings</i>	<i>Private sector</i>		<i>Total all building</i>	
	no.	\$m	no.	\$m	no.	\$m	no.		\$m	\$m		
MELBOURNE STATISTICAL DIVISION												
1996-97	19 670	2 185.2	447	35.7	20 117	2 221.0	1 189	592.3	1 527.1	2 303.0	5 116.2	
1997-98	26 490	3 026.5	723	56.0	27 213	3 082.6	1 029	701.2	2 168.2	2 593.0	6 376.8	
1998-99	28 615	3 549.8	661	49.6	29 266	3 599.4	1 555	800.3	1 918.6	2 642.2	7 042.1	
1998												
June	2 237	279.3	91	7.4	2 328	286.7	64	57.1	110.6	173.9	517.7	
July	2 226	257.1	45	3.0	2 271	260.1	134	62.7	142.1	162.2	485.0	
August	2 376	290.3	51	4.2	2 427	294.5	192	69.5	314.2	335.2	699.2	
September	2 335	282.5	33	2.3	2 368	284.9	77	66.7	192.7	246.1	597.7	
October	2 287	300.5	74	5.0	2 361	305.5	51	69.6	216.5	457.2	832.4	
November	2 282	287.0	57	3.7	2 339	290.7	351	76.2	179.5	236.0	602.9	
December	2 524	302.7	54	5.7	2 578	308.4	145	60.5	107.1	133.7	502.6	
1999												
January	1 708	210.4	125	8.8	1 833	219.1	22	41.6	87.9	153.8	414.5	
February	2 785	353.4	51	3.1	2 826	356.5	229	73.7	109.3	206.7	636.9	
March	2 554	326.1	37	4.0	2 591	330.1	103	75.3	159.7	226.8	632.3	
April	2 447	281.9	52	3.4	2 499	285.3	160	72.3	126.8	157.4	515.0	
May	2 642	337.1	37	2.4	2 679	339.5	48	63.0	174.4	202.0	604.5	
June	2 449	320.8	45	4.0	2 494	324.8	43	69.2	108.4	125.1	519.1	
July	2 747	352.0	88	6.3	2 835	358.3	194	92.2	183.6	208.6	659.2	
August	3 768	494.0	39	4.3	3 807	498.3	78	86.1	159.2	226.2	810.7	
September	3 038	405.7	72	5.9	3 110	411.6	33	76.9	198.4	214.0	702.5	
TOTAL VICTORIA												
1996-97	26 014	2 793.3	596	46.7	26 610	2 839.9	1 240	728.5	1 879.7	2 839.8	6 408.2	
1997-98	34 178	3 811.3	1 171	88.6	35 349	3 899.8	1 089	858.5	2 476.9	3 064.5	7 822.8	
1998-99	37 194	4 482.8	894	66.9	38 088	4 550.0	1 616	951.2	2 262.4	3 125.8	8 626.7	
1998												
June	3 010	359.2	179	13.8	3 189	373.0	66	71.3	136.4	213.0	657.3	
July	2 850	321.5	75	4.8	2 925	326.3	138	72.9	174.0	196.7	595.9	
August	3 000	355.6	67	5.3	3 067	360.9	196	78.6	340.5	366.4	806.0	
September	3 192	372.8	48	3.4	3 240	376.2	85	80.7	230.6	302.2	759.0	
October	2 921	368.0	103	7.2	3 024	375.3	55	85.0	242.2	491.2	951.4	
November	2 991	362.4	91	6.5	3 082	368.9	357	90.5	204.2	267.9	727.2	
December	3 081	361.1	61	6.3	3 142	367.4	159	70.2	136.2	177.4	614.9	
1999												
January	2 297	274.0	155	10.9	2 452	284.9	23	52.4	111.6	184.6	521.8	
February	3 469	431.8	83	5.5	3 552	437.4	232	86.9	129.8	255.7	780.0	
March	3 467	425.2	61	5.5	3 528	430.7	109	90.5	188.4	275.0	796.3	
April	3 196	365.7	57	3.8	3 253	369.5	163	85.7	146.3	183.9	639.0	
May	3 516	436.2	42	3.1	3 558	439.3	52	74.4	202.3	241.6	755.4	
June	3 214	408.5	51	4.6	3 265	413.2	47	83.4	156.3	183.2	679.8	
July	3 565	444.8	134	9.2	3 699	454.0	194	105.2	211.9	248.2	807.4	
August	4 619	587.3	66	6.5	4 685	593.8	85	101.9	204.5	282.8	978.5	
September	3 964	513.6	105	8.7	4 069	522.1	36	95.7	217.2	240.6	858.5	

(a) Valued at \$10,000 and over.

(b) Valued at \$50,000 and over.

(c) Excludes dwelling units created as a result of conversions or construction of non-residential buildings.

(d) Dwelling units created as a result of conversions or construction of non-residential buildings.

Source: *Building Approvals, Victoria (Cat. no. 8731.2) (monthly)*.

NEW HOUSES AND OTHER RESIDENTIAL BUILDINGS, NUMBER OF DWELLING UNITS

Period	New houses				New other residential buildings			
	Approved	Commenced	Under construction(a)	Completed	Approved	Commenced	Under construction(a)	Completed
	no.	no.	no.	no.	no.	no.	no.	no.
1995-96	18 889	19 399	8 066	21 883	4 155	4 276	3 906	3 086
1996-97	19 805	18 652	8 937	17 613	6 805	6 047	4 151	5 727
1997-98 r	27 937	26 004	12 368	22 445	7 412	7 598	5 148	6 542
1998-99	29 227	29 165	14 935	26 445	8 861	8 185	6 197	6 904
1998								
March qtr	6 577	6 034	11 512	5 242	1 938	1 924	4 806	1 220
June qtr	7 807	7 165	12 368	6 239	1 747	1 894	5 148	1 561
September qtr	7 526	7 362	12 740	6 951	1 706	2 000	5 404	1 700
December qtr	6 873	7 399	13 127	6 995	2 375	1 682	5 175	1 906
1999								
March qtr r	7 071	6 494	13 846	5 699	2 461	2 159	5 752	1 559
June qtr	7 757	7 910	14 935	6 800	2 319	2 344	6 197	1 739

(a) Under construction at the end of the period.

Source: *Building Activity, Victoria* (Cat. no. 8752.2) (quarterly).

Period	Residential buildings		Non-residential buildings						Total
	New	Alterations and additions	Shops	Factories	Offices	Education	Health	Other	
	\$m	\$m	\$m	\$m	\$m	\$m	\$m	\$m	\$m
COMMENCED									
1996-97	2 692.2	761.0	348.2	343.8	508.5	410.3	303.6	1 003.3	6 371.1
1997-98	3 850.5	891.1	598.5	241.8	428.6	270.9	250.2	1 399.8	7 931.4
1998-99	4 484.3	987.3	442.7	264.2	425.6	462.2	215.2	1 173.4	8 454.9
1998									
March qtr	870.9	187.0	134.1	54.1	91.8	65.7	42.6	327.7	1 774.0
June qtr	1 083.5	251.9	259.4	45.0	119.2	79.4	67.7	225.2	2 131.3
September qtr	1 126.0	221.9	111.3	54.9	102.5	132.6	26.7	225.3	2 001.2
December qtr	1 066.4	291.0	137.8	79.9	136.2	175.6	95.1	429.7	2 411.7
1999									
March qtr r	1 046.8	223.8	75.3	64.4	98.3	98.2	41.1	190.0	1 837.9
June qtr	1 245.1	250.6	118.4	64.9	88.6	55.9	52.2	328.3	2 204.0
UNDER CONSTRUCTION AT END OF PERIOD									
1996-97	1 582.3	358.5	284.6	214.9	233.4	310.0	236.2	1 741.7	4 961.6
1997-98	2 274.1	412.4	406.6	141.9	241.6	320.2	279.8	1 466.0	5 542.6
1998-99	2 831.0	454.5	429.8	123.5	184.0	463.2	221.1	1 609.6	6 316.7
1998									
March qtr	2 040.0	366.6	210.4	157.6	208.5	307.4	244.8	1 442.2	4 977.5
June qtr	2 274.1	412.4	406.6	141.9	241.6	320.2	279.8	1 466.0	5 542.6
September qtr	2 426.8	412.1	461.0	124.2	237.1	420.3	210.4	1 464.6	5 756.6
December qtr	2 430.6	450.5	427.2	134.7	253.1	489.2	257.4	1 566.8	6 009.6
1999									
March qtr r	2 644.3	471.4	402.8	138.2	203.8	522.4	243.7	1 461.3	6 087.9
June qtr	2 831.0	454.4	429.8	123.5	184.0	463.2	221.1	1 609.6	6 316.7
COMPLETED									
1996-97	2 617.6	768.5	364.8	295.6	404.0	342.0	194.6	1 106.7	6 093.8
1997-98	3 213.6	866.6	474.7	338.4	449.4	283.2	208.2	1 738.4	7 572.4
1998-99	3 982.2	989.4	477.0	293.3	522.3	328.4	302.8	1 099.2	7 994.6
1998									
March qtr	681.2	227.7	99.6	61.9	85.6	131.1	96.8	201.6	1 585.7
June qtr	870.5	216.7	67.4	67.2	91.8	67.6	32.4	198.6	1 612.1
September qtr	997.9	236.8	88.8	77.0	108.3	33.2	103.7	247.0	1 892.7
December qtr	1 080.2	259.6	179.9	70.0	139.6	107.3	51.6	340.7	2 229.1
1999									
March qtr r	855.2	215.9	100.6	64.1	155.6	69.2	56.6	312.4	1 829.6
June qtr	1 049.0	277.2	107.6	82.1	118.6	118.6	90.9	199.3	2 043.3

Source: Building Activity, Victoria (Cat. no. 8752.2) (quarterly).

15

PRIVATE NEW CAPITAL EXPENDITURE, BY SELECTED INDUSTRIES AND TYPE OF ASSET

Period	Selected industries				Type of asset	
	Mining	Manufacturing	Other selected industries	Total	New buildings and structures	Equipment, plant and machinery
	\$m	\$m	\$m	\$m	\$m	\$m
ACTUAL						
1997-98 r	833	3 401	6 809	11 044	2 858	8 185
1998-99	1 234	2 951	7 166	11 351	3 208	8 143
1998						
March qtr	163	756	1 527	2 446	615	1 831
June qtr	212	r 964	1 822	2 998	765	2 233
September qtr	r 318	715	1 843	2 876	861	2 015
December qtr	288	780	1 900	2 968	r 819	2 149
1999						
March qtr	321	r 652	1 665	2 639	862	1 776
June qtr	306	803	1 758	2 867	666	2 202
EXPECTED						
1998-99	1 340	3 362	7 060	11 761	3 460	8 301
1999-2000	631	3 008	4 587	8 227	1 754	6 473

Source: State Estimates of Private New Capital Expenditure (Cat. no. 5646.0) (quarterly).

16

COMMERCIAL FINANCE COMMITMENTS

Month	Fixed loan facilities						Type of lender			
	Construction	Purchase of real property	Purchase of plant and equipment	Wholesale	Other	Total	Revolving credit facilities	Total commitments	Banks	All other lenders
	\$m	\$m	\$m	\$m	\$m	\$m	\$m	\$m	\$m	\$m
1998										
June	100.3	628.8	140.0	115.5	1 154.9	2 139.5	1 440.2	3 579.8	3 085.4	494.4
July	112.8	527.1	156.0	100.2	1 112.3	2 008.4	2 243.1	4 251.5	3 570.6	680.9
August	87.4	391.1	113.9	169.3	451.3	1 212.9	2 182.6	3 395.5	2 912.4	483.1
September	113.1	461.6	185.7	78.8	714.5	1 553.6	1 488.9	3 042.5	2 438.7	603.8
October	85.2	461.3	181.2	91.0	441.0	1 259.8	2 389.8	3 649.6	2 889.9	759.7
November	184.9	456.8	182.7	148.7	1 031.2	2 004.4	1 394.7	3 399.1	2 857.4	541.7
December	68.8	477.2	208.3	269.3	956.5	1 980.1	2 742.8	4 722.9	3 681.9	1 041.1
1999										
January	38.8	358.9	138.8	51.2	461.8	1 049.5	1 220.7	2 270.3	2 102.2	168.0
February	90.4	384.5	176.4	74.5	852.9	1 578.6	2 593.6	4 172.2	3 081.1	1 091.2
March	110.5	477.6	190.6	329.7	1 220.7	2 329.2	2 467.0	4 796.2	3 984.1	812.2
April	82.5	469.2	170.8	79.0	501.9	1 303.4	1 361.5	2 664.9	2 104.1	560.8
May	183.6	508.8	157.4	39.4	771.1	1 660.2	1 569.8	3 230.1	2 837.0	393.1
June	171.3	623.3	211.8	88.4	2 189.9	3 284.7	1 748.3	5 033.0	4 695.6	337.4
July r	137.8	521.0	159.0	14.9	684.6	1 517.2	1 977.9	3 495.1	3 074.9	420.2
August	234.0	552.6	173.0	25.2	755.8	1 740.6	1 195.8	2 936.5	2 759.9	176.5

Source: ABS Time Series Service (PC Ausstats)

17

SECURED HOUSING FINANCE COMMITMENTS, DWELLING UNITS

Month	Original series		Seasonally adjusted		Trend estimates	
	no.	\$m	no.	\$m	no.	\$m
1998						
June	11 123	1 183	10 355	1 098	9 887	1 053
July	10 629	1 155	9 819	1 067	9 756	1 046
August	9 249	1 013	9 311	1 014	9 637	1 043
September	9 637	1 041	9 418	1 021	9 553	1 048
October	9 649	1 060	9 438	1 046	9 542	1 067
November	9 513	1 109	10 027	1 129	9 657	1 103
December	9 860	1 160	9 646	1 145	9 915	1 157
1999						
January	8 095	983	10 361	1 247	10 258	1 221
February	9 727	1 154	9 892	1 198	r 10 572	r 1 279
March	12 455	1 520	11 335	1 377	r 10 778	r 1 322
April	11 014	1 348	11 404	1 410	r 10 848	r 1 346
May	10 896	1 389	10 989	1 365	r 10 802	r 1 356
June	11 305	1 445	10 215	1 334	r 10 685	1 358
July r	10 518	1 334	10 127	1 294	10 546	1 355
August	10 871	1 399	10 640	1 379	10 435	1 353

Source: Housing Finance for Owner Occupation, Australia (Cat. no. 5609.0) (monthly).

18

RETAIL TURNOVER, BY INDUSTRY (EXCLUDING MOTOR VEHICLES, PARTS, PETROL, ETC.)

Month	Food retailing	Department stores	Clothing and soft good retailing	Household good retailing	Recreational good retailing	Other retailing	Hospitality and services	Total
	\$m	\$m	\$m	\$m	\$m	\$m	\$m	\$m
1998								
July	1 097.3	254.5	183.7	304.3	135.7	270.0	316.8	2 562.1
August	1 072.3	212.7	165.6	295.0	144.7	269.2	323.5	2 483.1
September	1 067.9	227.9	168.8	310.5	150.5	272.8	323.5	2 521.9
October	1 152.0	251.6	176.7	330.0	149.1	297.2	337.0	2 693.7
November	1 110.4	284.8	192.7	314.8	158.0	305.5	332.7	2 698.8
December	1 298.4	498.8	286.1	421.4	232.0	402.0	379.2	3 517.9
1999								
January	1 160.7	224.5	171.0	320.9	148.9	260.0	349.2	2 635.3
February	1 058.0	185.9	151.8	291.5	130.9	256.8	333.4	2 408.2
March	1 166.9	233.5	194.9	308.0	145.3	313.4	372.3	2 734.2
April	1 121.6	236.6	205.5	311.4	139.3	296.2	386.6	2 697.2
May	1 130.3	253.5	207.1	324.0	138.5	288.0	387.9	2 729.2
June	1 089.6	220.4	208.8	319.1	142.0	299.6	382.0	2 661.4
July	1 170.3	263.4	209.4	320.8	135.3	318.3	427.2	2 844.6
August	1 138.2	221.3	200.9	321.3	138.3	310.9	r 411.6	2 742.6
September	1 146.6	248.5	213.6	330.6	148.6	320.2	427.6	2 835.6

Source: Retail Trade, Australia (Cat. no. 8501.0) (monthly).

19

EXPORTS AND IMPORTS, BY SECTIONS OF THE AUSTRALIAN EXPORT AND IMPORT CLASSIFICATIONS(a)

Section	1998-99		3 months ending September 1999	
	Imports	Exports	Imports	Exports
	\$m	\$m r	\$m	\$m
0 Food and live animals chiefly for food	1 313	3 917	320	932
1 Beverages and tobacco	134	166	34	45
2 Crude materials, inedible (except fuels)	585	1 396	139	280
3 Mineral fuels, lubricants, and related materials	1 150	798	366	312
4 Animal and vegetable oils, fats and waxes	108	108	20	23
5 Chemicals and related products, n.e.c.	r 3 248	976	780	253
6 Manufacturing goods classified chiefly by material	4 470	2 422	1 184	629
7 Machinery and transport equipment	13 489	2 907	3 529	802
8 Miscellaneous manufactured articles	r 5 343	1 043	1 580	286
9 Commodities and transactions of merchandise trade, n.e.c.	1 175	2 764	236	497
Total	31 015	16 496	8 188	4 059

(a) Any discrepancies between sums of the component items and totals are due to rounding.

Source: Foreign Trade Australia: Fasttracs Database.

20

OVERSEAS TRADE, MAJOR TRADING PARTNERS(a)

Country	1997-98		1998-99		3 months ending September 1999	
	Imports	Exports	Imports	Exports	Imports	Exports
	\$m	\$m	\$m	\$m	\$m	\$m
Belgium-Luxembourg	243	91	239	102	56	26
Brazil	134	76	118	48	28	8
Canada	390	122	392	125	103	28
China	2 154	624	2 537	669	788	209
Fiji	133	245	180	242	52	70
Finland	193	12	188	9	50	2
France	631	168	619	131	153	36
Germany	2 116	268	2 341	407	584	84
Hong Kong	338	1 073	431	900	104	157
India	256	188	261	192	76	43
Indonesia	637	325	1 078	225	231	61
Italy	963	396	1 038	288	249	60
Japan	3 847	1 686	4 134	1 676	1 108	430
Korea, Republic of	882	1 039	847	862	222	262
Malaysia	668	517	873	430	230	141
Mexico	80	77	103	90	28	11
Netherlands	254	81	292	109	75	23
New Zealand	1 311	1 552	1 333	r 1 654	390	457
Pakistan	97	87	87	44	21	6
Papua New Guinea	163	235	64	188	12	45
Philippines	135	388	157	r 387	38	89
Saudi Arabia	107	268	107	511	40	139
Singapore	492	989	510	1 084	136	355
South Africa	147	272	125	r 217	41	53
Sweden	585	41	598	25	173	6
Switzerland	277	24	335	34	83	8
Taiwan	852	657	905	919	232	179
Thailand	400	341	523	343	159	90
United Kingdom	1 694	453	1 839	1 169	435	117
United States of America	7 027	1 603	6 891	1 469	1 733	455
Other and unknown	1 645	2 040	1 870	1 947	556	409
Total	28 851	15 938	31 015	r 16 496	8 188	4 059

(a) The list of countries in this table reflects the volume of trade with Victoria. Information about Victoria's trade with other countries is available on request.

Source: Overseas Trade: Fasttracs Database.

21

VALUE OF OVERSEAS TRADE—VICTORIA AND AUSTRALIA

Period	Victoria			Australia		
	Imports	Exports	Excess of exports	Imports	Exports (including re-exports)	Excess of exports
	\$m	\$m	\$m	\$m	\$m	\$m
1996-97	25 093	16 306	-8 787	78 998	78 932	-66
1997-98	28 851	r 15 938	-12 920	90 684	87 770	-2 914
1998-99	31 015	r 16 496	-14 519	r 97 613	r 86 017	-11 596
1998						
July	2 841	1 375	-1 466	8 905	7 476	-1 429
August	2 669	1 538	-1 131	8 145	7 753	-392
September	2 772	1 424	-1 348	8 544	7 604	-940
October	2 871	1 446	-1 425	9 002	7 816	-1 186
November	2 552	1 309	-1 243	8 535	7 291	-1 244
December	2 505	1 431	-1 074	7 820	7 898	78
1999						
January	2 300	1 190	-1 110	7 231	r 6 303	-928
February	2 274	r 1 219	-1 055	r 7 112	6 245	-867
March	2 855	1 506	-1 349	8 699	r 7 333	-1 366
April	2 393	1 342	-1 051	7 731	r 6 430	-1 301
May	r 2 331	1 383	-948	r 7 747	r 6 974	-773
June	r 2 652	1 333	-1 319	8 142	r 6 893	-1 249
July	r 2 663	r 1 256	-1 407	8 179	r 7 143	-1 036
August	2 748	r 1 356	-1 392	r 8 873	r 7 340	-1 533
September	2 777	1 447	-1 330	9 024	7 412	-1 612

Source: Overseas Trade: Fasttraccs Database.

22

TOURIST ACCOMMODATION

Quarter ended	Hotels, motels, guest houses and serviced apartments(a)						
	Establishments	Guest rooms	Bed spaces	Room nights occupied	Room occupancy rate	Persons employed	Takings from accommodation
	no.	no.	no.	'000	%	no.	\$'000
1997							
December	661	27 616	76 010	1 484.0	58.4	21 478	164 141
1998							
March	668	28 603	77 836	1 534.1	60.1	21 322	175 596
June	669	28 850	78 637	1 415.7	53.9	20 754	153 243
September	676	29 404	80 902	1 464.3	54.4	20 776	169 966
December	682	29 717	81 976	1 602.6	58.7	20 813	182 207
1999							
March	686	30 160	83 420	1 680.8	62.0	21 129	195 573
June	698	30 766	85 247	1 545.6	55.4	21 725	170 130

(a) Comprising establishments with 15 or more rooms or units.

Source: Tourist Accommodation, Australia (Cat. no. 8635.0) (quarterly).

SELF-HELP ACCESS TO STATISTICS

- CPI INFOLINE* For current and historical Consumer Price Index data, call 1902 981 074 (call cost 75c per minute).
- DIAL-A-STATISTIC* For the latest figures for National Accounts, Balance of Payments, Labour Force, Average Weekly Earnings, Estimated Resident Population and the Consumer Price Index call 1900 986 400 (call cost 75c per minute).
- INTERNET* www.abs.gov.au
- LIBRARY* A range of ABS publications is available from public and tertiary libraries Australia-wide. Contact your nearest library to determine whether it has the ABS statistics you require.

WHY NOT SUBSCRIBE?

- PHONE* +61 1300 366 323
- FAX* +61 03 9615 7848

CONSULTANCY SERVICES

ABS offers consultancy services on a user pays basis to help you access published and unpublished data. Data that is already published and can be provided within 5 minutes is free of charge. Statistical methodological services are also available. Please contact:

<i>INQUIRIES</i>	<i>City</i>	<i>By phone</i>	<i>By fax</i>
	Canberra	02 6252 6627	02 6207 0282
	Sydney	02 9268 4611	02 9268 4668
	Melbourne	03 9615 7755	03 9615 7798
	Brisbane	07 3222 6351	07 3222 6283
	Perth	08 9360 5140	08 9360 5955
	Adelaide	08 8237 7400	08 8237 7566
	Hobart	03 6222 5800	03 6222 5995
	Darwin	08 8943 2111	08 8981 1218

POST Client Services, ABS, PO Box 10, Belconnen ACT 2616

EMAIL client.services@abs.gov.au



2130320010996
ISSN 0158-202X

RRP \$16.00